

GENERAL NOTES

- 1 REFER TO MUNICIPAL ENGINEERING DRAWINGS FOR SITE SERVICES GRADES AND DRAINAGE PATTERNS
 - 2 BY NON-ENGINEERS (CENTRAL AMULANCE COMMUNICATION KENORA)
 - 3 REFER TO DRAWING S-01 PREPARED FOR COMMERCIAL AREAS
- TOTAL REGULATORY SIZE PARKING STALLS = 39 CARS
 TOTAL RESIDENTIAL = 53 CARS
 AT GRADE - LOT 1 = 7 CARS
 PARKING PROVIDED PARKADE = 36 CARS
 RESIDENTIAL = 38 CARS
 1 CAR PER DWELLING UNIT = 38 CARS
 TOTAL COMMERCIAL STALLS PROVIDED = 26 CARS
 STANDARD SIZE STALLS PROVIDED = 21 CARS
 SMALL CAR STALLS PROVIDED = 5 CARS
 OFFICE 562m² 20h² / CAR = 20 CARS
 1 STALL = 1 CARS
 TOTAL CAR STALLS REQUIRED = 21 CARS
 LOADING AREA = 1 CARS
 NET FLOOR AREA 6738 SF (626m²)
 GROSS FLOOR AREA 6000 SF (5625m²)
 COMMERCIAL

PARKING ANALYSIS

- S1 LANDSCAPED AREA BY COMMERCIAL TENANT
- S2 CURBED-FACED CONCRETE SIDEWALK
- S3 SODDED AREA
- S4 ASPHALT PAVING INCL. PAVING ON PUBLIC R.O.W. TO EXIST ASPHALT LINE
- S5 RETAINING WALL - STANDARD DURABLE UNITS. REF. TO DWG. IVC-A-1 (CHANNEL TECH. SERV.)
- S6 UNITS WITH METAL SHOES
- S7 METAL RAILING
- S8 HANDICAPPED PARKING STALL
- S9 PROTECT EXISTING SHRUBS AND TREES ALONG EMBANKMENT
- S10 DRIVE TO UPPER LEVEL PARKING - ASPHALT PAVING
- S11 6m EASEMENT FOR STORM SEWER CONSTRUCTION AS S21
- S12 CONCRETE APRON
- S13 BOARDWALK - SEE DETAIL
- S14 WALL MOUNTED LIGHT
- S15 WHEELCHAIR DEPRESSSED CURB
- S16 CONCRETE PATIO SLAB
- S17 PROTECT EXISTING SHORE LINE
- S18 STORM SEWER (CONCRETE) TO BE REPLACED WITH A NEW CULVERT. MATERIALS TO BE SUPPLIED BY CITY.
- S19 PROVIDE SAFETY LIGHTS & MARKERS TO END OF DOCK AS REQUESTED BY FISHERIES & OCEANS CANADA
- S20 8' HIGH LIGHT STANDARDS
- S21 3" WIDE STAIRS/10R / 2-2X6 TREAD ON PRE-ENG METAL STRINGER - HORIZONTAL ONE SIDE HORIZONTAL - 4X4 POST FASTEN TO METAL STRINGER-2X4 T&B RAIL-2X2 PICKETS
- S22 5" WIDE STAIRS/10R/HORIZONTAL BOTH SIDES CONSTRUCTION AS S21
- S23 6" H WOOD PRIVACY FENCE C/W 3" WIDE SERVICE ACCESS GATE. 4X4 POSTS-2X4 T&B RAIL-1X6 BOARDS @ 6" o.c.
- S24 STONE RETAINING WALL
- S25 30" HIGH FENCE. 4X4 POST @ 4' o/c FASTEN TO CONCRETE CURB WITH METAL SHOE - 2X6 HORIZONTAL RAIL
- S26 30" HIGH TUBULAR METAL GUARD RAIL ANCHORED TO CONCRETE CURB
- S27 USE RAILWAY TIES AS WHEELSTOP. PIN TIES TO GROUND WITH 1/2" X30" LONG REBARS
- S28 FOR NEW PATIO DETAILS REFER TO DRAWING S03
- S29 FOR GENERATOR BUILDING REFER TO CONDO INSTALLATION BY ISLAND NEW
- S30 LIGHT POLE BASE LOCATION. FOR POLE BASE DETAIL REFER TO DRAWING S00
- S31 FOR CAR PLUG-IN POLE DETAIL REFER TO DRAWING S00

SITE PLAN NOTES

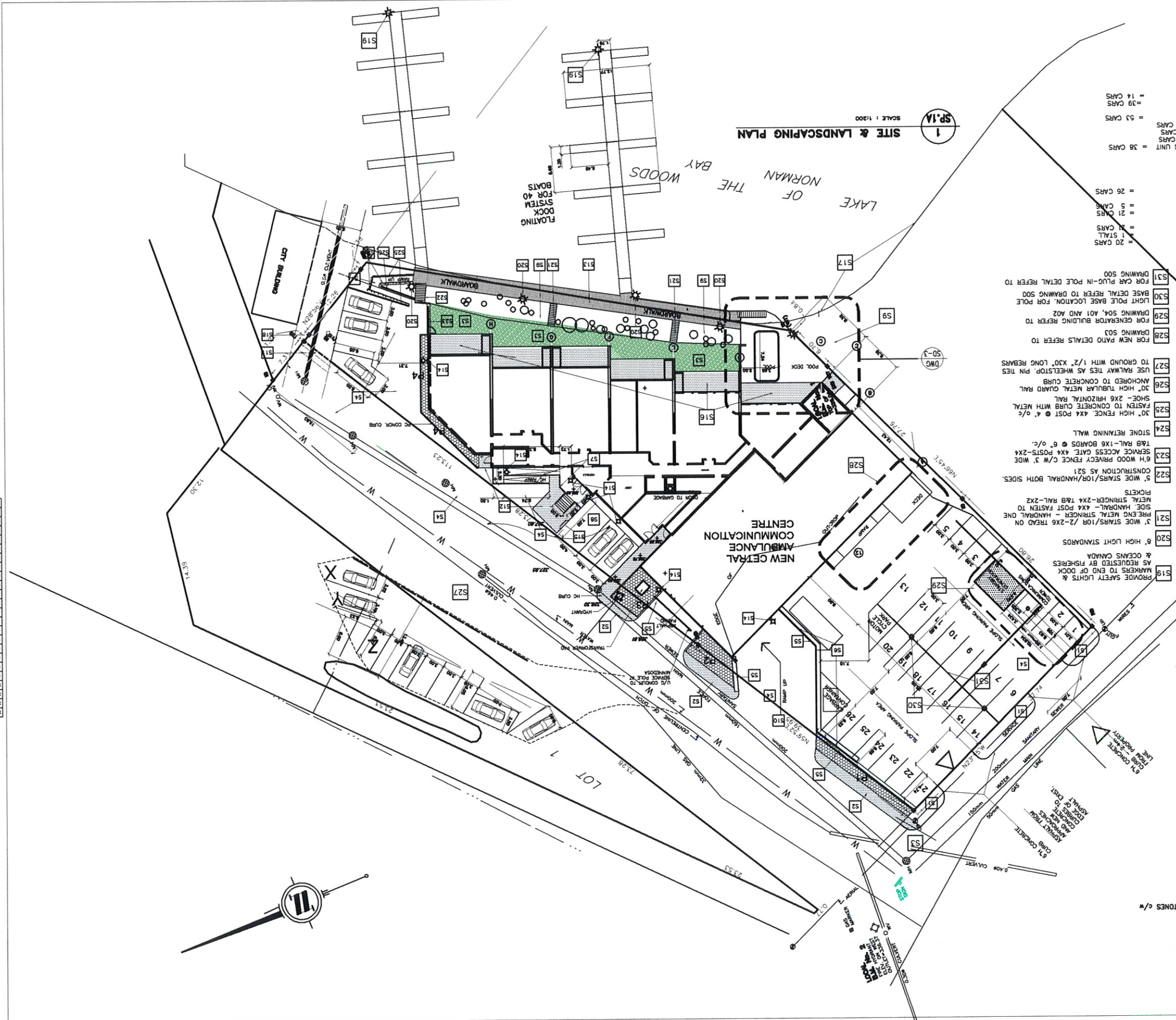
- P1 4-6" dia STONES ON FILTER CLOTH. 7 - LILAC SHRUBS
- P2 4-6" dia STONES ON FILTER CLOTH. 10 - DOGWOOD
- P3 4-6" dia STONES ON FILTER CLOTH. 1 - AMUR MAPLE
- P4 4-6" dia STONES ON FILTER CLOTH. 7 - DOGWOOD
- P5 12 - SCHUBERT CHOKECHERRY

SHRUBS AND TREES

- EXTENT OF COMMERCIAL AREA
- CONCRETE APRON / PATIOS
- SODDED AREAS
- LANDSCAPE FABRIC UNDERLAY
- STONE BED - 4 to 6" DIA STONES c/w
- BOARDWALK

1 SITE & LANDSCAPING PLAN

SCALE: 1:200



Printed No.: 00000
 Date: OCTOBER 31/08
 2 of 39
 Part 3 of 4

Drawn By: DB
 Checked By: JH
 NAME: PROJECT WORK
 SP-1A REV.20C

Change and revision records are indicated in the table and are the property of the client. The contractor is responsible for the accuracy of the information provided in this drawing. The contractor shall be responsible for obtaining all necessary permits and approvals from the appropriate authorities. The contractor shall be responsible for the safety of all workers and the public during the construction process. The contractor shall be responsible for the protection of all existing utilities and structures. The contractor shall be responsible for the removal and disposal of all waste materials. The contractor shall be responsible for the maintenance of all access roads and easements. The contractor shall be responsible for the completion of all work in accordance with the approved plans and specifications. The contractor shall be responsible for the payment of all taxes and fees. The contractor shall be responsible for the insurance of all workers and equipment. The contractor shall be responsible for the bonding of all workers and equipment. The contractor shall be responsible for the cleanup of all construction sites. The contractor shall be responsible for the protection of all natural resources. The contractor shall be responsible for the protection of all cultural resources. The contractor shall be responsible for the protection of all archaeological resources. The contractor shall be responsible for the protection of all historical resources. The contractor shall be responsible for the protection of all environmental resources. The contractor shall be responsible for the protection of all social resources. The contractor shall be responsible for the protection of all economic resources. The contractor shall be responsible for the protection of all cultural resources. The contractor shall be responsible for the protection of all historical resources. The contractor shall be responsible for the protection of all archaeological resources. The contractor shall be responsible for the protection of all historical resources. The contractor shall be responsible for the protection of all archaeological resources.

No.	REVISIONS	Date
1	General Revisions	08/28/08
2	General Revisions	08/28/08
3	General Revisions	08/28/08
4	General Revisions	08/28/08
5	General Revisions	08/28/08
6	General Revisions	08/28/08
7	General Revisions	08/28/08
8	General Revisions	08/28/08
9	General Revisions	08/28/08
10	General Revisions	08/28/08
11	General Revisions	08/28/08
12	General Revisions	08/28/08
13	General Revisions	08/28/08
14	General Revisions	08/28/08
15	General Revisions	08/28/08
16	General Revisions	08/28/08
17	General Revisions	08/28/08
18	General Revisions	08/28/08
19	General Revisions	08/28/08
20	General Revisions	08/28/08
21	General Revisions	08/28/08
22	General Revisions	08/28/08
23	General Revisions	08/28/08
24	General Revisions	08/28/08
25	General Revisions	08/28/08
26	General Revisions	08/28/08
27	General Revisions	08/28/08
28	General Revisions	08/28/08
29	General Revisions	08/28/08
30	General Revisions	08/28/08

700-294 PORTAGE AVE
 WINNIPEG, MANITOBA
 R3C 0B9
 TEL (204) 956-0900
 FAX (204) 956-4766

PROJECT MANAGEMENT LTD.
ININew
 logo